

EXTENSION AND MODIFICATION OF THE SAUDI IRON & STEEL PLANT (HADEED)

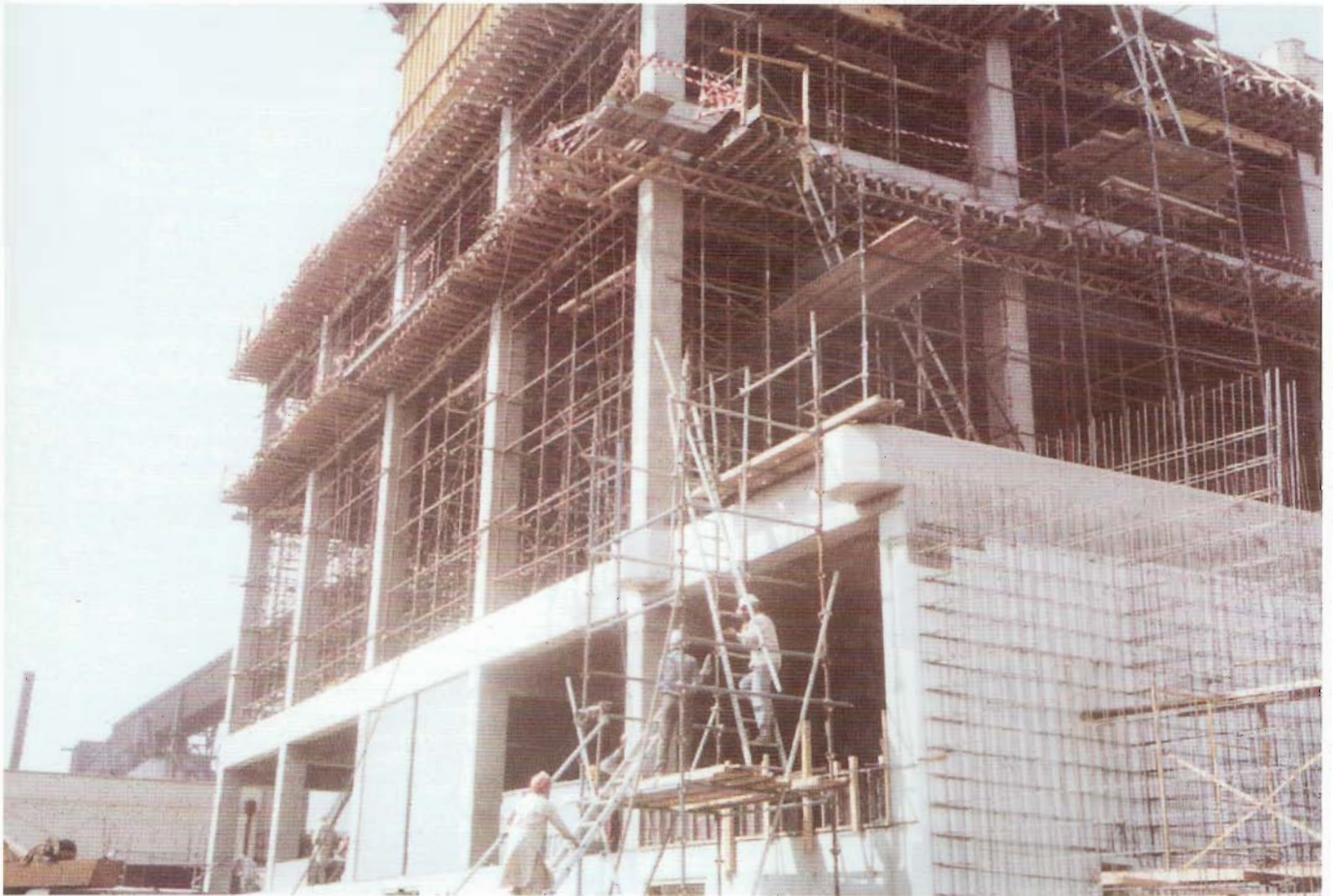
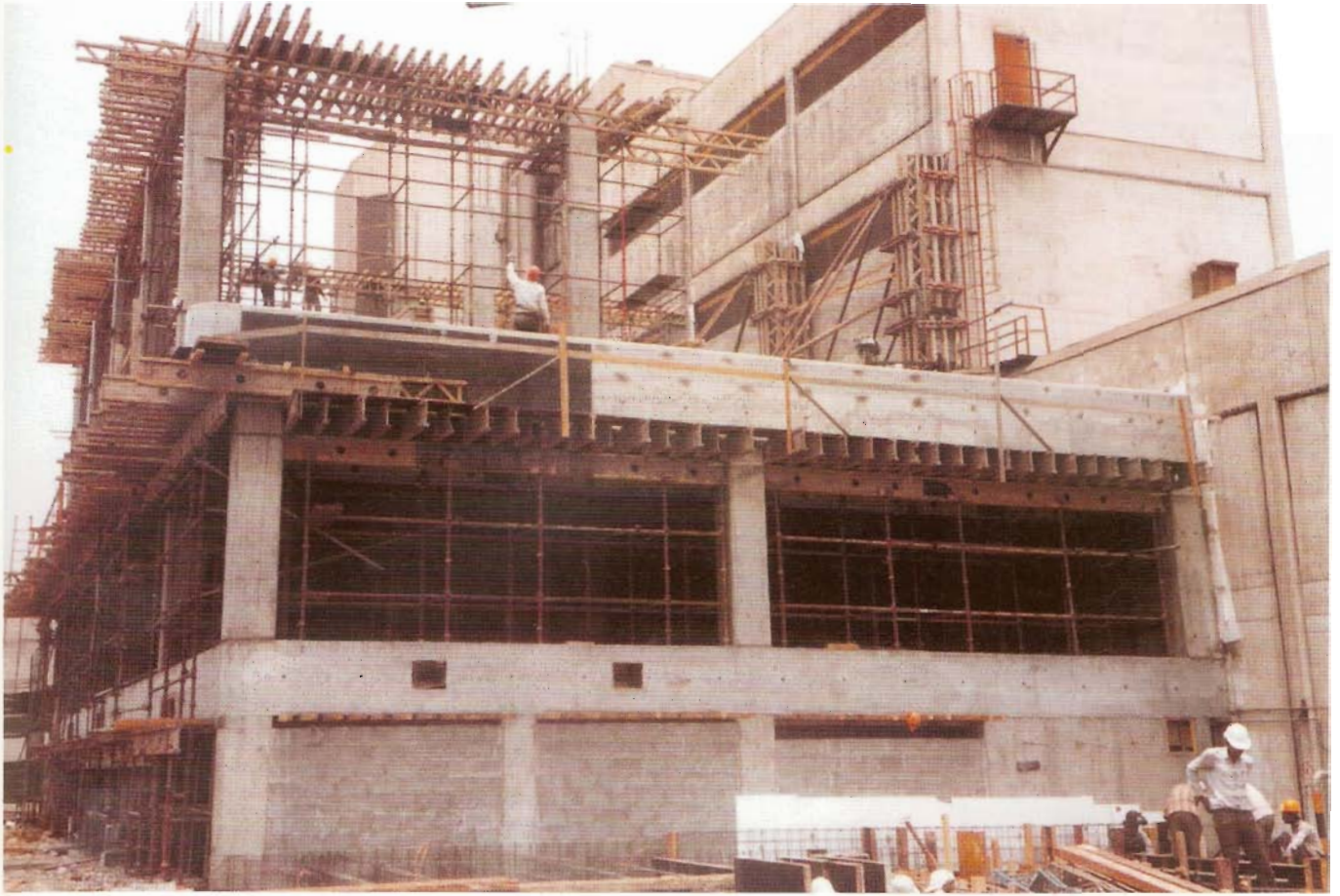


| | |
|---------------------|--|
| PROJECT NAME | EXTENSION & MODIFICATION OF THE SAUDI IRON & STEEL PLANT (HADEED) CIVIL AND BUILDING WORKS |
| LOCATION | JUBAIL INDUSTRIAL AREA SAUDI ARABIA |
| CLIENT | HADEED/VOEST ALPINE |
| CONSTRUCTION PERIOD | 12 MONTHS |

This project involved construction of new buildings, new infrastructure & foundation works as well as modification works to existing civil works, within the existing operation and production area of the plant when it was producing at the limit of its capacity.

Work was carried out by a team of dedicated professionals in a hot and dusty environment under the most stringent safety conditions. The multitude of simultaneous activities were planned in details in agreement with the plant operation personnel, whilst taking into account access problems and interference with operations, and work was executed without surprises or accidents, on time and within budget.







The work included:

- Demolition and concrete cutting using robot operated high pressure hydrocutting equipment.
- Concrete repair work using Shotcreting equipment.
- Concrete coring work using electrical coring equipment.
- Concrete foundations modifications.
- Construction of new foundations for:
 - Pipe Sleepers
 - Steel Melt Shop Extension
 - Additional Handling System
 - Underground Hopper
- Execution of large concrete pours such as the 650 cu. m. pour for the Electrical Main Sub-station raft foundation.
- Construction of new buildings for:
 - Transformer House
 - Auxiliary Pump Station
 - Co2 Room
 - Scrap Shear Substation
- Ultra Fast-Track Crash program for building a 5-storey solid reinforced concrete Main Substation of 500 sq.m. in a record time of 8 weeks on a 2 shifts basis, even though the Substation was located in a restricted and congested area.
- General underground utilities, Conduit Banks & Shafts.
- General Grouting work following machinery installation.
- 2 Shutdown program works executed each in a crash 16 hours/day, 3 week period.

