

TMA JET HANGAR



PROJECT NAME	TMA JET HANGAR
LOCATION:	BEIRUT INTERNATIONAL AIRPORT, LEBANON
CLIENT	TRANS MEDITERRANEAN AIRWAYS (TMA)
CONSTRUCTION PERIOD	2 YEARS

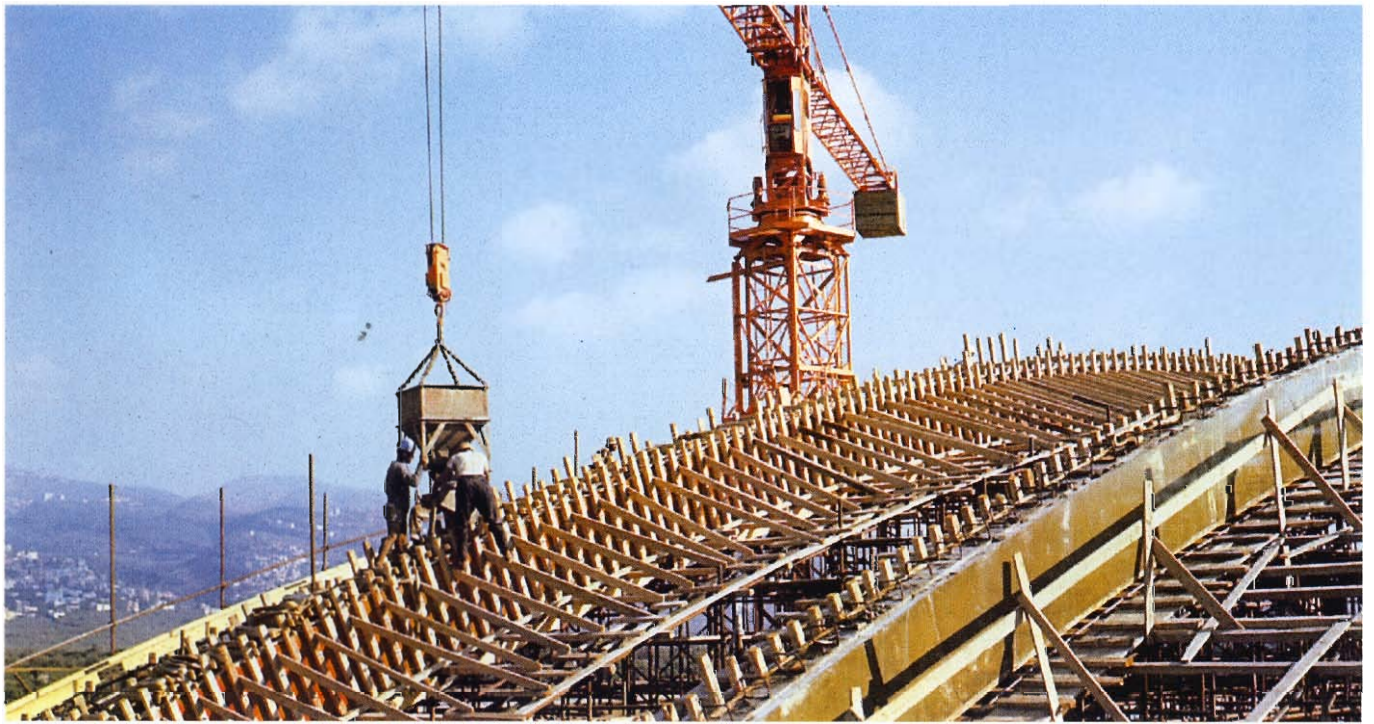


At the time that MAC Construction was awarded the contract for this project, TMA was one of the largest cargo airlines in the world and had recently added two 747 Jumbo Jet aircraft to its fleet. The work involved the design and construction of an aircraft maintenance concrete arch hangar capable of housing one Jumbo Jet or two 707 Jets at any one time under its 66-metre-span roof. Encompassed in the hangar design were adjoining offices to accommodate maintenance and administration staff.

The work included:

- A central feature of this project, reinforced concrete main hangar building, covering an area of approximately 5,000 square metres and capable of housing a single Jumbo Jet.





The mass required to resist the lateral thrust of the roof barrel arches was achieved through building two-tier offices and workshops on either side of the main arch structure.

- An adjoining building housed the main administration offices with the basement floors reserved for the main computer facilities. These offices required raised non-conductive flooring, a dedicated air-conditioning system, a halon gas fire-fighting system and an independent security program. Attention was paid to the utilization of special 12-millimetre plate glass windows to eliminate the very high-frequency noise caused by Jet aircraft and maintenance work in the hangar.
- An asphalted area of 24,000 square metres, including a guardhouse, transformer room, underground water reservoir, underground piping, equipment laydown area and landscaping. In addition 6,000 square metres of taxiway was installed to connect the new facility with the rest of the airport.

