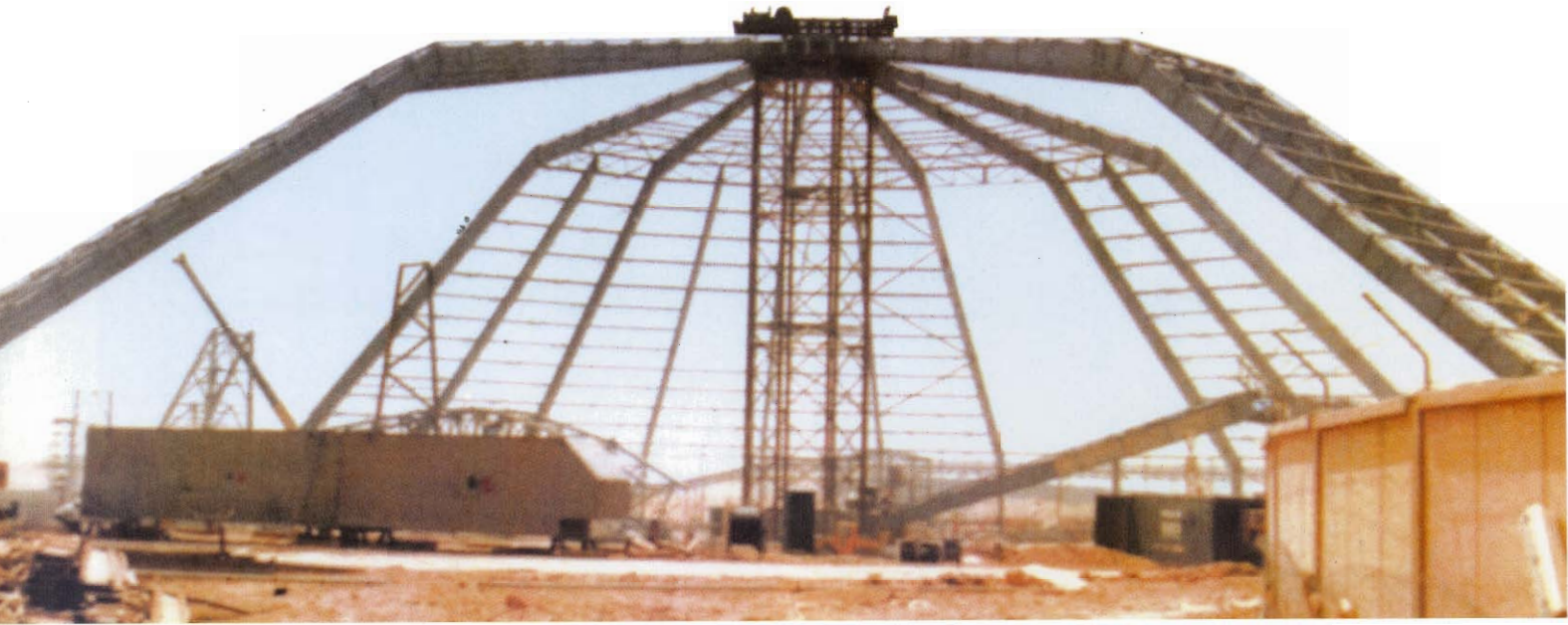
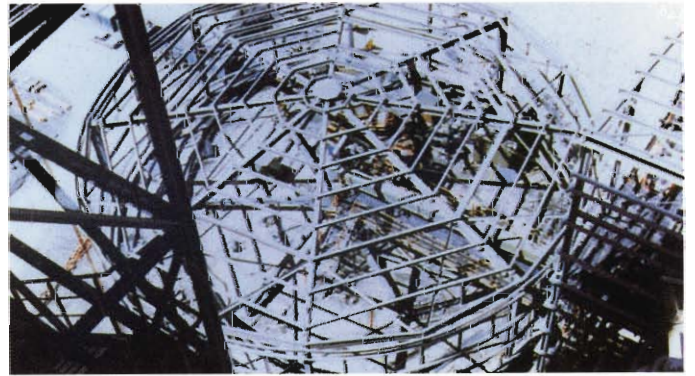


YAMAMA CEMENT PLANT 3000 T/DAY EXTENSION



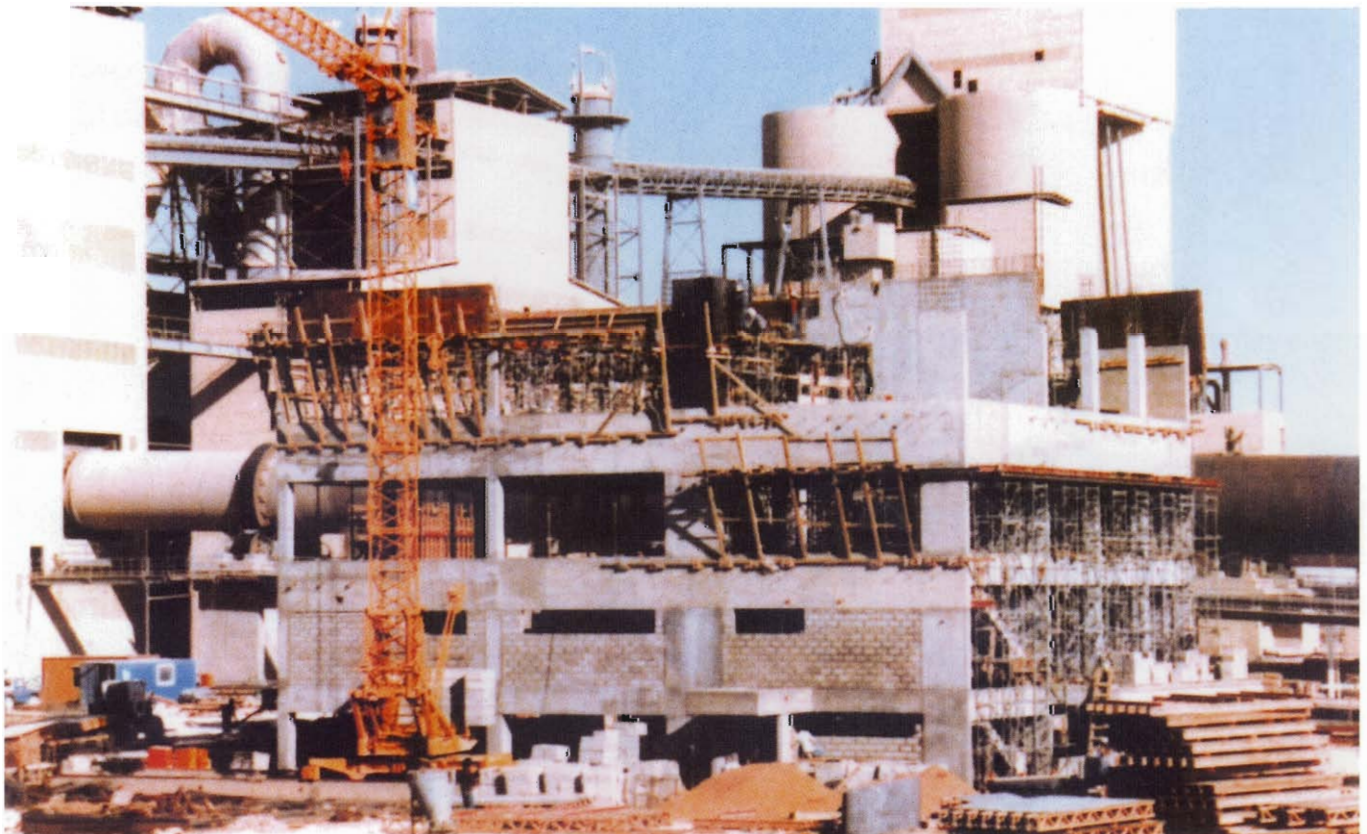
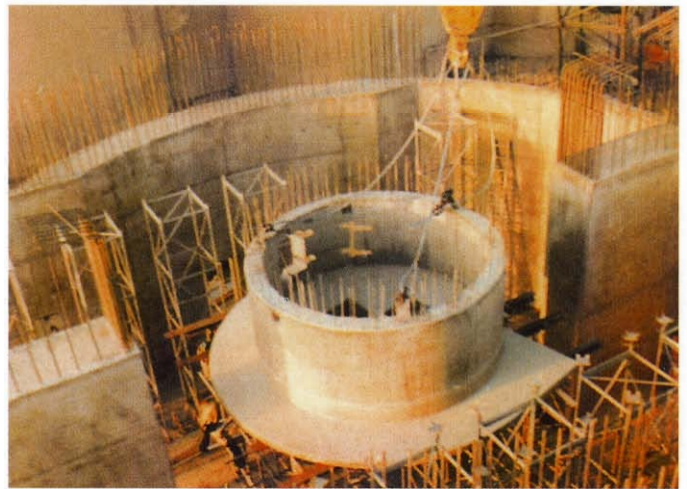
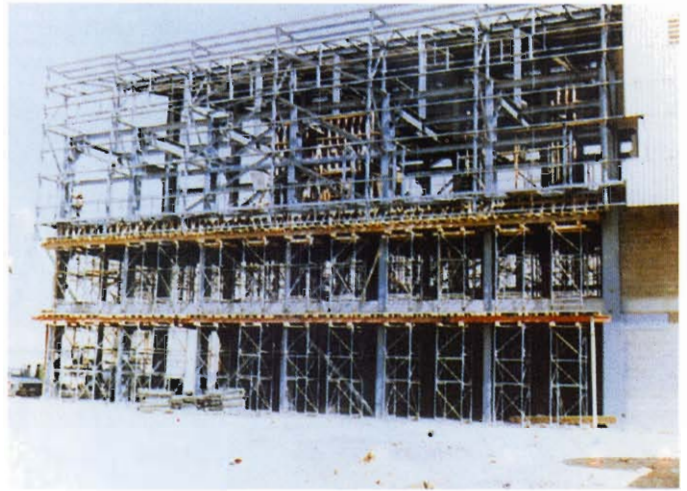
PROJECT NAME	YAMAMA CEMENT PLANT 3000 T/DAY EXTENSION
LOCATION	RIYADH, SAUDI ARABIA
CLIENT	YAMAMA CEMENT COMPANY
CONSTRUCTION PERIOD	23 MONTHS

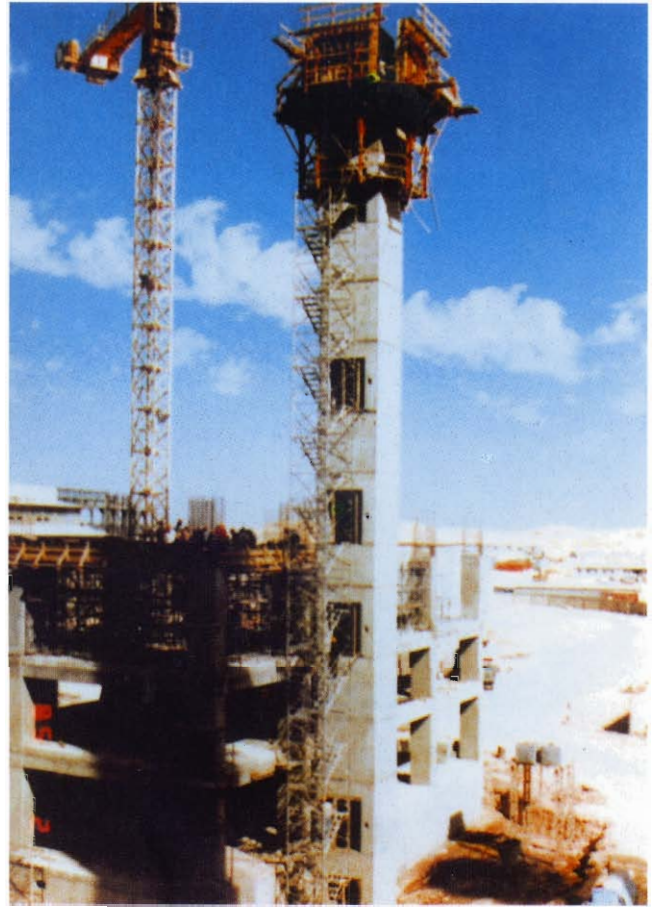


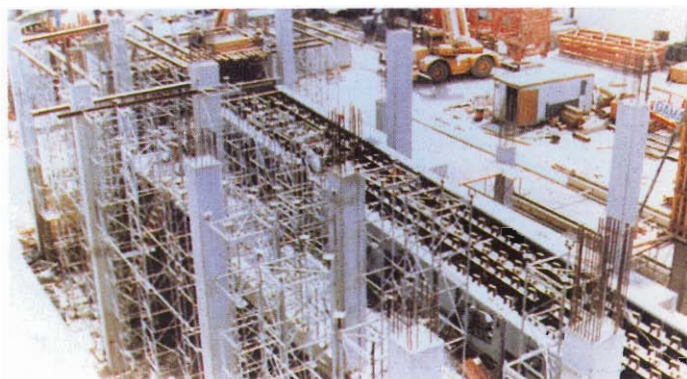
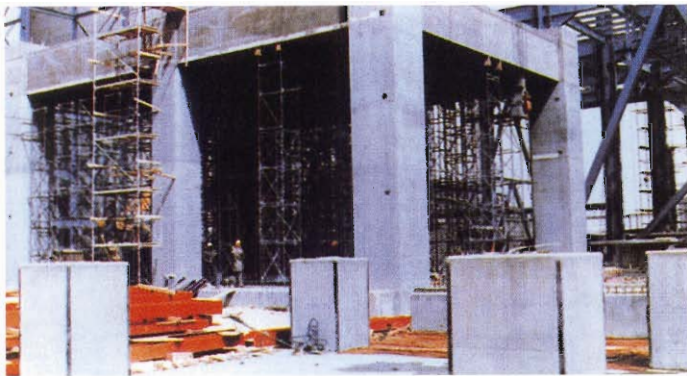
The construction of Extension IV of the Yamama Cement Plant in Riyadh enabled production-line capacity to be raised by 3,000 tons/day. In addition, it provided production facilities for type V sulphate-resistant cement (the existing plant had been designed to produce only type I Portland cement).

The civil works were carried out on a design and build basis as part of a 50-50 joint venture with the German company Bilfinger and Berger. The job entailed all design, supply and delivery of materials as well as construction.









The work involved the design, procurement and construction of all the civil structures and buildings, including:

- Limestone and clay pre-blending beds.
- Gypsum storage and transport.
- Limestone crushing and transport.
- Raw material transport.
- Raw mill-building.
- Two raw meal blending silos.
- Pre-heater tower.
- Kiln foundations.
- Cooler and burner building.
- Clinker conveyor bridge and transfer station.
- Gypsum crusher and transport.
- Cement mill building.
- Clinker transport.
- Three cement silos.
- Cement transport, packing plant and bag-loading station.

All the above were completed with services, inserts, cable-trenching facilities, roads and fences. They were then connected to the existing plant facilities without disrupting its fully operational activities.

