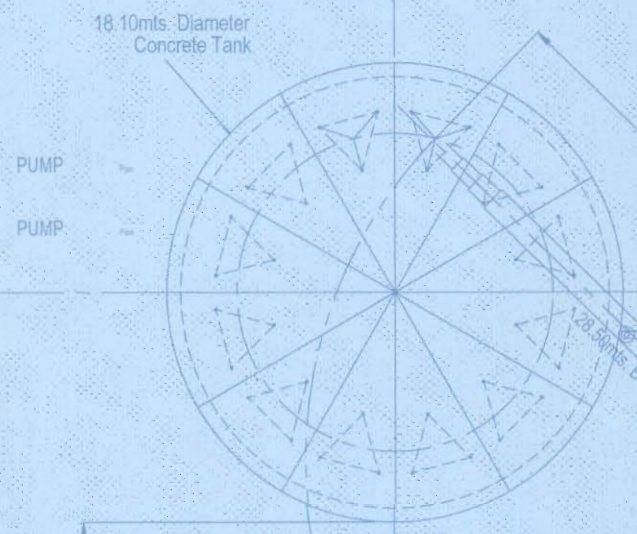
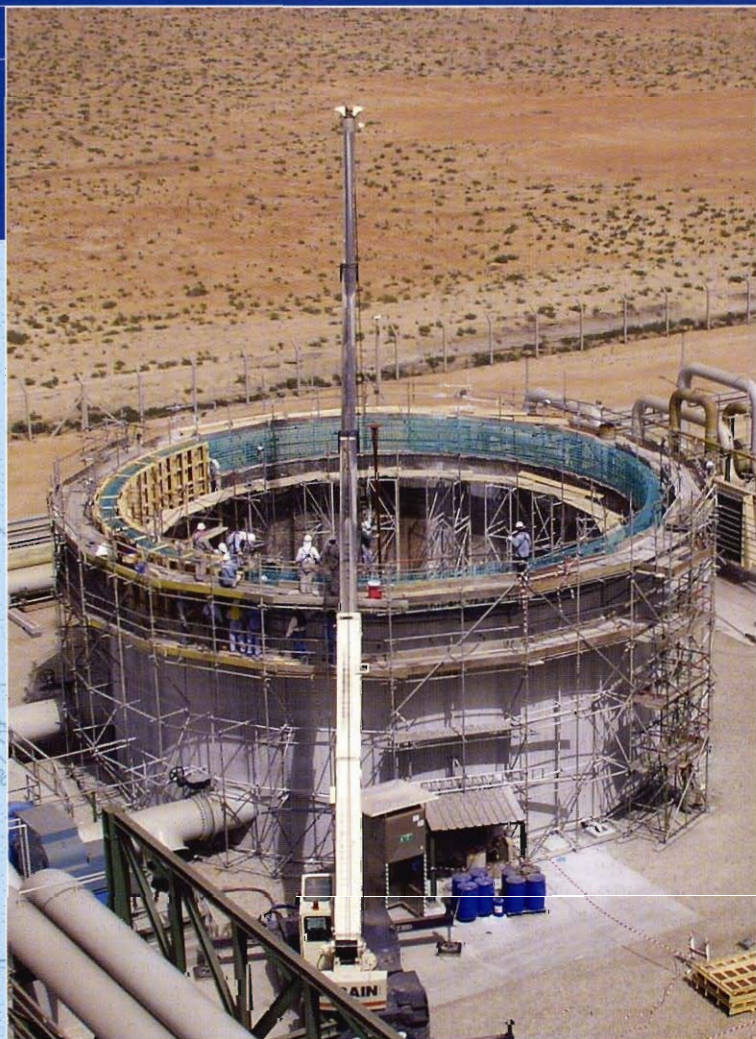




Demolition of a Cooling Water Tank's Roof

Challenging Round the Clock Shutdown Work

**ASU – Gas V Project
Al Jubail**

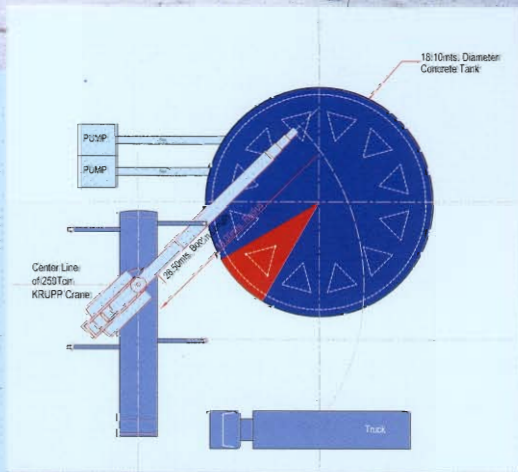
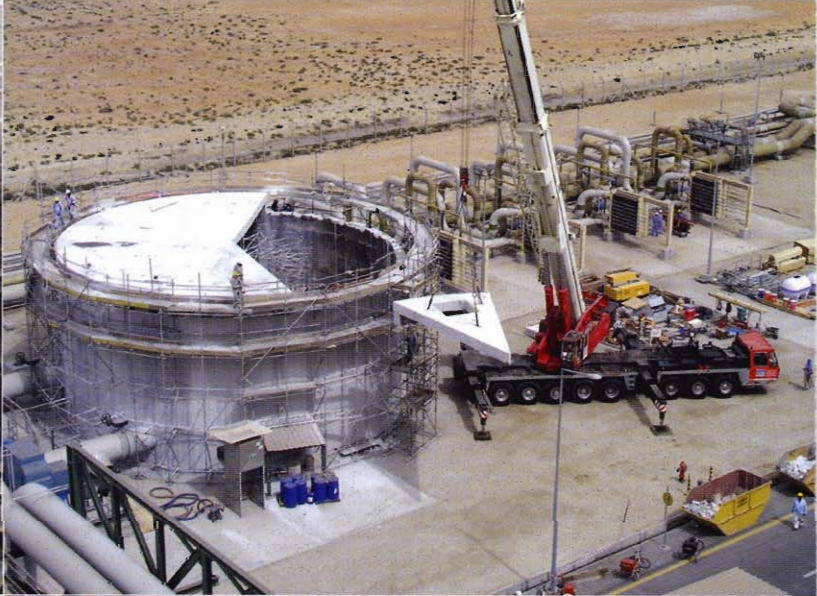


**Client:
Linde Arabian Contractors**

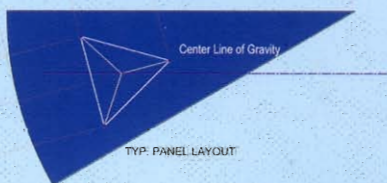
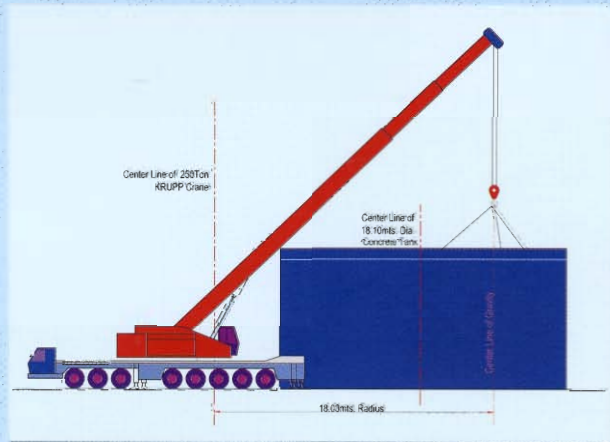


POSITION - 2

ROAD



The schematic diagram shows the process for lifting the 12 pie sections weighing 45 tons each using a 250 tons capacity Hydraulic Truck Mounted Crane.



Modern Arab Construction
 Concrete Repair Division
 P.O.Box 855 – Al-Khobar 31952, Saudi Arabia
 Tel.: (03) 882 2233 – Telefax: (03) 882 5804
 E-mail: crd@macconstruct.com
 Website: www.macconstruct.com